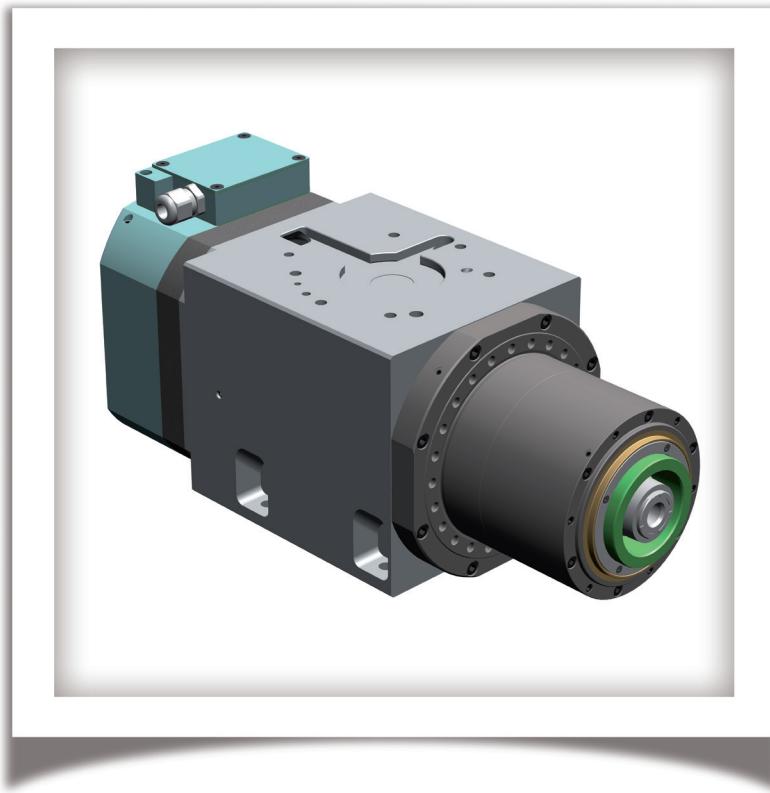


CAPELLINI STANDARD PRODUCTION

# Working light alloys



**After thirty years of “custom-built” manufacturing, our experience leads us to the production of high-quality, high-precision off-the-shelf items**

8 ranges of electrospindles  
for any application immediately available



*To win the challenge of quality*

# Working light alloys

Range of electrospindles created to work light alloys such as aluminium, resins and plastic for machine tools.  
This range consists of milling electrospindles, birotary heads, positioners and turning electrospindles.

## Milling

Commercial Code	Max Power S1 [kW]	Max Speed [rpm]	Tool Holder	Shape	Dimensions [mm]
AMI0150AE00	28	15000	HSK-A 63	Cylindrical	Ø230 L576
AMI0200AE00	22	20000	HSK-A 63	Cylindrical	Ø175 L445
AMI0180AE00	19	18000	HSK-E 63	Cylindrical	Ø170 L390
AMI0180BE00	10	18000	HSK-E 63	Square	150x150 L390

## Turning electrospindles

Commercial Code	Max Power S1 [kW]	Max Speed [rpm]	Interface	Shape	Dimensions [mm]
ATR0500AE00	25	5000	ASA 6"	Cylindrical	Ø296 L650

## Positioners

Commercial Code	Max Input Speed [rpm]	Transmission Ratio	Output Speed [rpm]
AMO0600CB00	3000	1:90	33,3

## Birotary heads









Commercial Code	A Axis		C Axis		Max Power S1 [kW]	Max Speed [rpm]	Tool Holder	Weight [kg]
	Swivel Angle [°]	Max Speed [rpm]	Swivel Angle [°]	Max Speed [rpm]				
AMB0180CE00	-90°/+100	16,8	±180	14,5	19	18000	HSK-E 63	165

## Bearings lubrication

Lifetime grease lubricated

Capellini has been designing and manufacturing electrospindles for 20 years. A relentless search for new solutions has led the company to develop increasingly interesting and innovative products.

That is why Capellini has grouped together all its most marketable and successful products into 8 families, identified by different colours:

-  Woodworking
-  Working light alloys
-  Metalworking - Milling electrospindles
-  Metalworking - Turning electrospindles
-  Metalworking - Motorspindles
-  Metalworking for grinding - Belt-Drive spindles
-  Metalworking for grinding - Electrospindles
-  Metalworking for grinding - HF electrospindles for inner grinding

We make your life easier!



Designing and manufacturing of electrospindles

29027 Podenzano - Piacenza, Italy

Via E. Mattei, 11

Tel. +39 0523 524 108 - Fax +39 0523 524 126

info@capellini-srl.com - www.capellini-srl.com

Doc. 008-00123 rev. 0