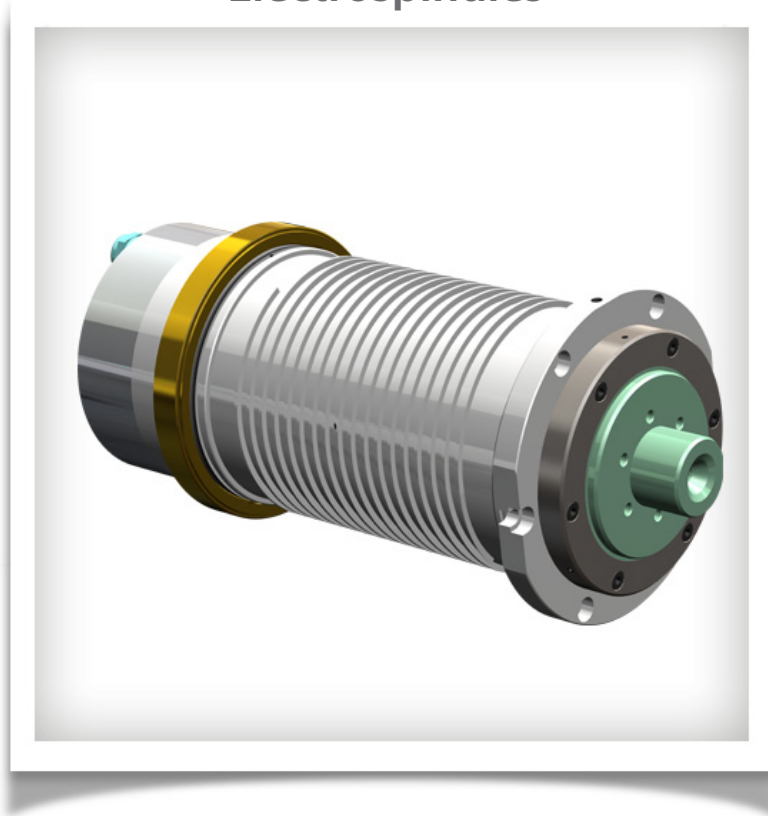


CAPELLINI STANDARD PRODUCTION

Metalworking for grinding

Electrospindles



After thirty years of “custom-built” manufacturing, our experience leads us to the production of high-quality, high-precision off-the-shelf items

8 ranges of electrospindles
for any application immediately available



To win the challenge of quality

Metalworking for grinding

Electrospindles

Range of grinding electrospindles for medium-to high-technology machines including wheel spindles for external and internal grinding, workpiece spindles and dressing spindles.

Wheel spindles for external grinding

Commercial Code	Type	Max Power S1 [kW]	Max Speed [rpm]	Interface	Shape	Dimensions [mm]	Cone Protusion *
SGE0050BE00	ES	9	5000	Cone Ø 78x75 taper 4°	Square	190x190 L516	S/D
SGE0040BE00	ES	10	4000	Cone Ø 82x90 taper 4°	Square	210x220 L590	S/D
SGE0037AE00	ES	23	3700	Cone Ø 90x150 taper 1:10	Cylindrical	Ø 170 L1180	S
SGE0030BE00	ES	15	3000	Cone Ø 100x90 taper 1:5	Square	210x230 L665	S/D
SGE0017BE00	ES	12,5	1750	Cone Ø 100x90 taper 1:5	Square	240x240 L806	S/D

* Note: S = Single, D = Double

Wheel spindles for internal grinding

Commercial Code	Type	Max Power S1 [kW]	Max Speed [rpm]	Tool Interface	Shape	Dimensions [mm]
SGI0300AE00	ES	6	30000	D 24/40	Cylindrical	Ø 100 L415
SGI0100AE00	ES	8	10000	D 32/56	Cylindrical	Ø 120 L490

Workpiece spindles

Commercial Code	Type	Max Power S1 [kW]	Max Speed [rpm]	Interface	Shape	Dimensions [mm]
SMS0040BE00	ES	2,7	4000	Ø 64 x 15	Square	190x190 L400
SMS0040BE01	ES	2,1	4000	Ø 98 x 15	Square	193x195 L492

Dressing spindles









Commercial Code	Type	Max Power S1 [kW]	Max Speed [rpm]	Interface	Shape	Dimensions [mm]
SGD0010BE00	ES	1,1	10000	Ø 30 x 21	Square	120x110 L300

Bearings lubrication

Lifetime grease

Capellini has been designing and manufacturing electrospindles for 20 years. A relentless search for new solutions has led the company to develop increasingly interesting and innovative products.

That is why Capellini has grouped together all its most marketable and successful products into 8 families, identified by different colours:

-  Woodworking
-  Working light alloys
-  Metalworking - Milling electrospindles
-  Metalworking - Turning electrospindles
-  Metalworking - Motorspindles
-  Metalworking for grinding - Belt-Drive spindles
-  Metalworking for grinding - Electrospindles
-  Metalworking for grinding - HF electrospindles for inner grinding

We make your life easier!



Designing and manufacturing of electrospindles

29027 Podenzano - Piacenza, Italy

Via E. Mattei, 11

Tel. +39 0523 524 108 - Fax +39 0523 524 126

info@capellini-srl.com - www.capellini-srl.com

Doc. 008-00128 rev. 0