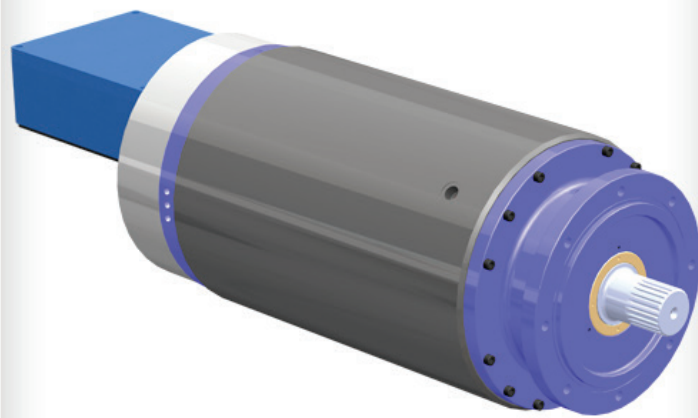


CAPELLINI STANDARD PRODUCTION

# Metalworking

Motorspindles



**After thirty years of “custom-built” manufacturing, our experience leads us to the production of high-quality, high-precision off-the-shelf items**

8 ranges of electrospindles  
for any application immediately available



*To win the challenge of quality*

# Metalworking

## Motorspindles

High-performance integrated motors for high-dimension milling machines, created for work in the energy sector and heavy duty industries (railways, shipbuilding and aircraft).

### Motorspindles









Commercial Code	Max Power S1 [kW]	Max Speed [rpm]	ØShaft [mm]	Machine connection [mm]	Shape	Dimensions [mm]
SMT0055AE00	103	5500	Ø60	Ø230	Cylindrical	Ø350 L1180
SMT0055AE01	103	5500	Ø75	Ø230	Cylindrical	Ø350 L1180
SMT0065AE00	63	5500	Ø60	Ø230	Cylindrical	Ø340 L870

### Bearings lubrication

Lifetime grease lubricated

Capellini has been designing and manufacturing electrospindles for 20 years. A relentless search for new solutions has led the company to develop increasingly interesting and innovative products.

That is why Capellini has grouped together all its most marketable and successful products into 8 families, identified by different colours:

-  Woodworking
-  Working light alloys
-  Metalworking - Milling electrospindles
-  Metalworking - Turning electrospindles
-  Metalworking - Motorspindles
-  Metalworking for grinding - Belt-Drive spindles
-  Metalworking for grinding - Electrospindles
-  Metalworking for grinding - HF electrospindles for inner grinding

We make your life easier!



Designing and manufacturing of electrospindles

29027 Podenzano - Piacenza, Italy

Via E. Mattei, 11

Tel. +39 0523 524 108 - Fax +39 0523 524 126

info@capellini-srl.com - www.capellini-srl.com

Doc. 008-00126 rev. 0