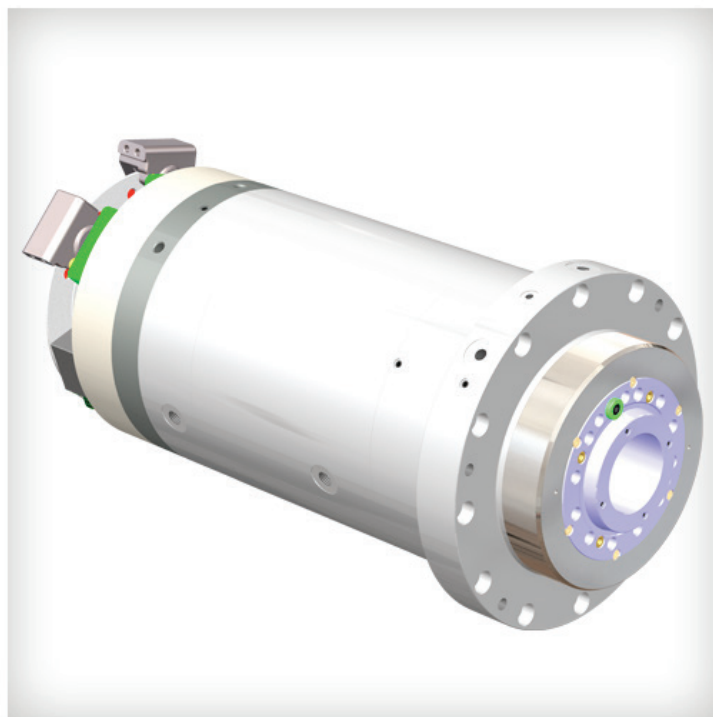


CAPELLINI STANDARD PRODUCTION

# Metalworking

Turning electrospindles



**After thirty years of “custom-built” manufacturing, our experience leads us to the production of high-quality, high-precision off-the-shelf items**

8 ranges of electrospindles  
for any application immediately available



*To win the challenge of quality*

# Metalworking

## Turning electrospindles

Electrospindles for high-dynamic and high-level automation turning machines.

### Turning electrospindles









Commercial Code	Max Power S1 [kW]	Max Speed [rpm]	Interface	Shape	Dimensions [mm]
STR0025AE00	35	2500	ASA 8"	Cylindrical	Ø 350 L841
STR0050AE00	25	5000	ASA 6"	Cylindrical	Ø 296 L650
STR0050BE00	17	5000	ASA 5"	Square	295x280 L670

#### Bearings lubrication

Lifetime grease lubricated

**Capellini** has been designing and manufacturing electrospindles for 20 years. A relentless search for new solutions has led the company to develop increasingly interesting and innovative products.

That is why **Capellini** has grouped together all its most marketable and successful products into 8 families, identified by different colours:

-  Woodworking
-  Working light alloys
-  Metalworking - Milling electrospindles
-  Metalworking - Turning electrospindles
-  Metalworking - Motorspindles
-  Metalworking for grinding - Belt-Drive spindles
-  Metalworking for grinding - Electrospindles
-  Metalworking for grinding - HF electrospindles for inner grinding

**We make your life easier!**



Designing and manufacturing of electrospindles

29027 Podenzano - Piacenza, Italy

Via E. Mattei, 11

Tel. +39 0523 524 108 - Fax +39 0523 524 126

info@capellini-srl.com - www.capellini-srl.com

Doc. 008-00125 rev. 0