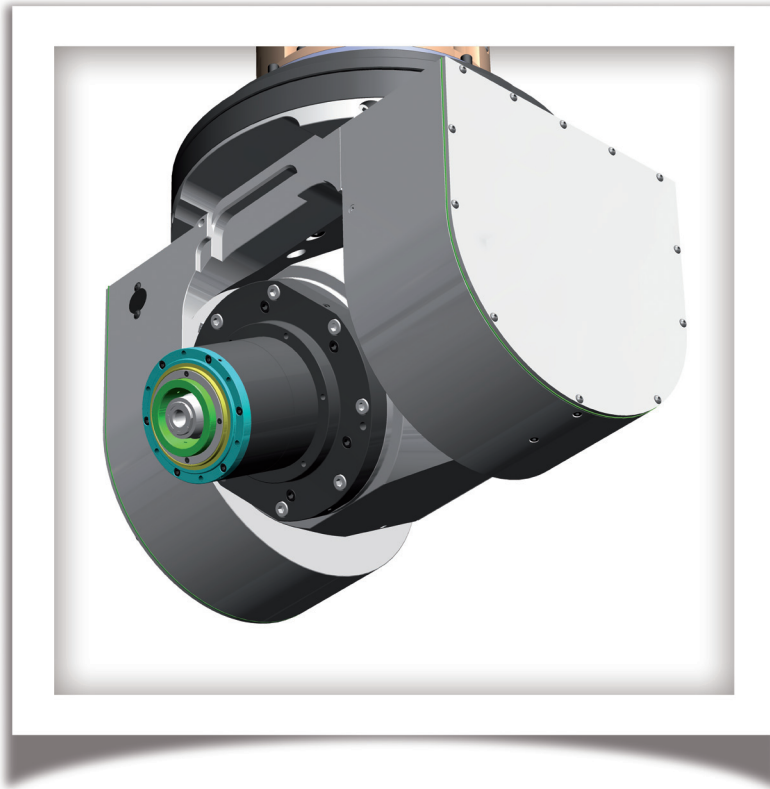


CAPELLINI STANDARD PRODUCTION

# Woodworking



**After thirty years of “custom-built” manufacturing, our experience leads us to the production of high-quality, high-precision off-the-shelf items**

8 ranges of electrospindles  
for any application immediately available



*To win the challenge of quality*

# Woodworking

Range of electrospindles and machine tool components designed for woodworking. Including electrospindles for milling, birotary heads and high-technology positioners.

## Milling

Commercial Code	Max Power S1 [kW]	Max Speed [rpm]	Tool Holder	Shape	Dimensions [mm]
WMI0180AE00	19	18000	HSK-E 63	Cylindrical	Ø 170 L390
WMI0180BE00	10	18000	HSK-E 63	Square	150x150 L390

## Birotary heads

Commercial Code	A Axis		C Axis		Max Power S1 [kW]	Max Speed [rpm]	Tool Holder	Weight [kg]
	Swivel Angle [°]	Max Speed [rpm]	Swivel Angle [°]	Max Speed [rpm]				
WMB0180CE00	-90°/+100	16,8	±180	14,5	19	18000	HSK-E 63	165

## Positioners









Commercial Code	Max Input Speed [rpm]	Transmission Ratio	Output Speed [rpm]
WMO0600CB00	3000	1:90	33,3

### Bearings lubrication

Lifetime grease lubricated

Capellini has been designing and manufacturing electrospindles for 20 years. A relentless search for new solutions has led the company to develop increasingly interesting and innovative products.

That is why Capellini has grouped together all its most marketable and successful products into 8 families, identified by different colours:

-  Woodworking
-  Working light alloys
-  Metalworking - Milling electrospindles
-  Metalworking - Turning electrospindles
-  Metalworking - Motorspindles
-  Metalworking for grinding - Belt-Drive spindles
-  Metalworking for grinding - Electrospindles
-  Metalworking for grinding - HF electrospindles for inner grinding

We make your life easier!



Designing and manufacturing of electrospindles

29027 Podenzano - Piacenza, Italy

Via E. Mattei, 11

Tel. +39 0523 524 108 - Fax +39 0523 524 126

info@capellini-srl.com - www.capellini-srl.com

Doc. 008-00122 rev. 0